



# Weekly Beacon

Week of Sunday, August 10, 2014

Dr. Mike Wetzel, Pastor

Joshua Wolfenden  
Director of Christian Education

Angela Wolfenden  
Worship Music Director

1271 Pinellas Bayway  
Tierra Verde, FL 33715  
(727) 866-7362

[www.theislandchapel.org](http://www.theislandchapel.org)

Questions: [nancyv@theislandchapel.org](mailto:nancyv@theislandchapel.org)

## Scripture Memorization August

### Proverbs 3:4-5

3:4 Then you will find favor and high regard in the sight of God and man. 3:5 Trust in the Lord with all your heart, and do not rely on your own understanding.

## MISSIONARY MOMENTS

Please pray for these missionaries this week:

Raised in a Southern Baptist church, Andrew Mann had his first taste of missions serving with a fellow NAMB missionary at East 7th Baptist Church in New York City. Burdened by the number of at-risk kids in the Mott Haven neighborhood of the Bronx, Andrew became church planter and executive director of Graffiti 2 Church and Community Ministries. Your partnership through the Cooperative Program and the Annie Armstrong Easter Offering allow Andrew the opportunity to serve through ministries such as after school and summer programs for kids, family advocacy and special events while spreading seeds of the Gospel and mentoring future missionaries.

### Acts 2:45 & 4:32

Giving was a vital part of the early Christian's life. It is reported in Acts 2 and 4 that some gave all they possessed. Giving must be important to believers today. Is giving important to you? Are you giving what God wants you to give?

**Your generous giving helps support these ministries. Thank you.**

## These are the ministries that we currently support:

- ◇ Manna on Wheels
- ◇ North India Christian Ministries
- ◇ Rafiki Foundation
- ◇ Military Ministry
- ◇ D & D Missionary Homes
- ◇ New Orleans Baptist Theological Seminary
- ◇ The Next STEPP Pregnancy Center
- ◇ Florida Baptist Children's Home
- ◇ Intervarsity
- ◇ Jesus Project Ministries

## SUNDAY SERVICES

8:00 am and 10:00 am

August 10, 2014

**Guest Speaker**  
**Dr. Doug Watkins**

9:00 AM Adult Sunday Bible Study

10:00 AM Children's Sunday School

Nursery available for children 3 1/2 and under.

\*\*\*\*\*

## WEDNESDAY EVENING SERVICE

**Prayer Meeting**  
**7:00 pm**

**August's Deacon**  
**of the Month**

**Janet Stringfellow**  
**305 342-3290**

[jstringfellow@voa-fla.org](mailto:jstringfellow@voa-fla.org)



Roy & Janet

## SCHEDULE

## ANNOUNCEMENTS

Aug 13	Wednesday Evening Prayer Meeting	7 pm
Aug 14	Thursday Bible Study At the Home of Chris & Judy Riley Call (251) 490-1350 for directions	7 pm
Aug 18	Ladies' Prayer Breakfast Beverly's La Croisette	7 am
Aug 19	Men's Prayer Breakfast Denny's 4000 34th St. So. St. Petersburg, FL	8 am
Aug 20	Wednesday Evening Prayer Meeting	7 pm
Aug 21	Thursday Bible Study At the Home of Chris & Judy Riley Call (251) 490-1350 for directions	7 pm
<b>Aug 26</b>	<b>Primary Election</b>	
Aug 27	Wednesday Evening Prayer Meeting	7 pm
Aug 28	Thursday Bible Study At the Home of Chris & Judy Riley Call (251) 490-1350 for directions	7 pm
Aug 30 - Sep 5	<b>Haiti Mission Trip #1</b>	
Sep 1	Ladies' Prayer Breakfast Beverly's La Croisette	7 am
Sep 1	Holiday - Church Office Closed	
Sep 2	Men's Prayer Breakfast Denny's 4000 34th St. So. St. Petersburg, FL	8 am
Sep 3	Wednesday Evening Prayer Meeting	7 pm
Sep 4	Thursday Bible Study At the Home of Chris & Judy Riley Call (251) 490-1350 for directions	7 pm
Sep 10	Wednesday Evening Prayer Meeting Bible Study Resumes Book of Revelation	7 pm
Sep 11	Thursday Bible Study At the Home of Chris & Judy Riley Call (251) 490-1350 for directions	7 pm
Oct 10 - Oct 18	<b>Haiti Mission Trip #2</b>	
Oct 28 - Nov 1	<b>New Orleans Mission Trip</b>	

### Highlighting Our Local and National Ministries

This Sunday, Cassie Rodriguez, IntersVarsity Christian Fellowship will visit The Island Chapel to speak about their ministry in colleges and universities. Last month, we were delighted to have a visit from Carole Alexander of Next Stepp Pregnancy Center. In the coming months, we will hear from representatives from some of the other organizations supported by your generosity. Listed on the front of this newsletter are other local, national and international ministries receiving our support.

Visit [www.theislandchapel.org](http://www.theislandchapel.org) for more info about these ministries.

#### JESUS PROJECT MINISTRIES



### Gift Collection for Haiti

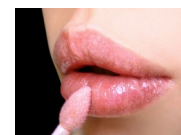
◆ Ladies' Scarves



◆ Men's Neckties



◆ Lip Gloss



**Boxes in the lobby.**